

HAMNET *Donna CaSa*

**EXCEPTIONAL
YET AFFORDABLE**



1,2 & 3 BHK Apartments

Chenkottukonam

Near Technopark, Trivandrum

Tel: 0471 4018 117

Mob: +91 98472 11117, 99475 41118

E-mail: info@hamnetbuilders.in | Web: www.hamnetbuilders.in



HAMNET HOMES

Turning Customers into Brand Ambassadors

Established with a focus to serve, backed by passion and perfection, Hamnet Homes in its 10 years of existence has grown to offer wonderful living spaces with a personal touch.

With a strong reputation for quality, expertise, reliability and customer centric approach we attract most of our sales through repeat business or the recommendations of existing customers.



HAMNET DonnaCaSa

*Attributes of a premium property...
Affordable to a larger segment.*

Located near one of the fastest growing residential and commercial stretch of Trivandrum city, Kazhakoottam, the project exemplifies sheer architectural excellence.

This comfy gated community, spread across 56 cents of greenery, consists of 53 carefully crafted apartments divided in with a super built - up area of (701 sqft) to (1389 sqft), each one of these 1BHK, 2BHK & 3BHK apartments with 2 level basement parking makes a Composed and Harmonious life. ;

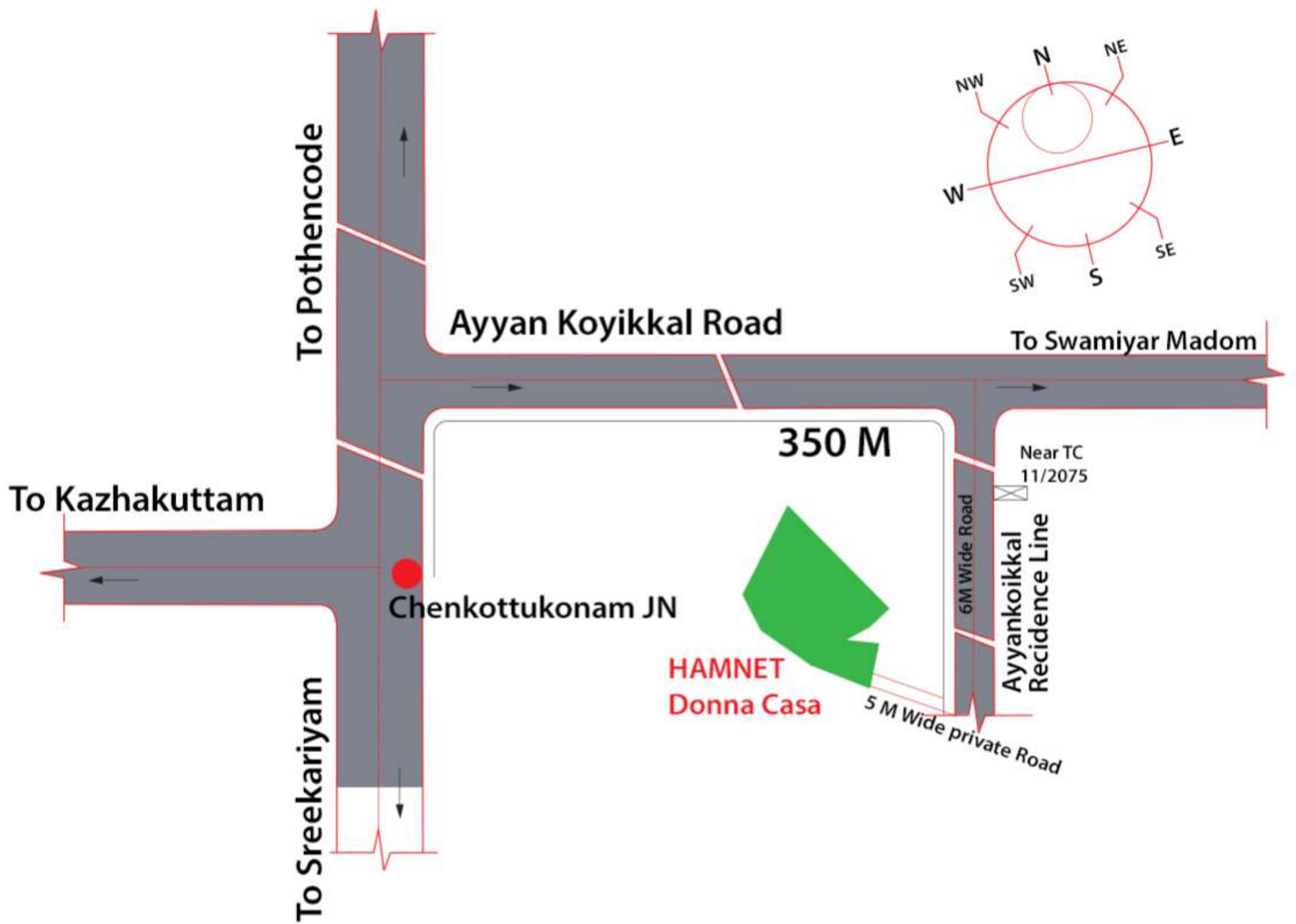
The project's excellent locale is its hallmark. Positioned close to IT parks, Major Hospitals, International schools, Shopping Malls, Green field stadium, leisure and entertainment zones, this property has an unparalleled advantage of High Return On Investment

Great amenities and elegant floor plans, all have been artistically planned and meticulously designed to maximise open spaces, green areas, natural light and ventilation without compromising on privacy.

Take a moment...look further in to Donna Casa... contact us... And be a part of this affordable luxury housing project at the most preferred location in Trivandrum



Location Map



Distance From Donna Casa

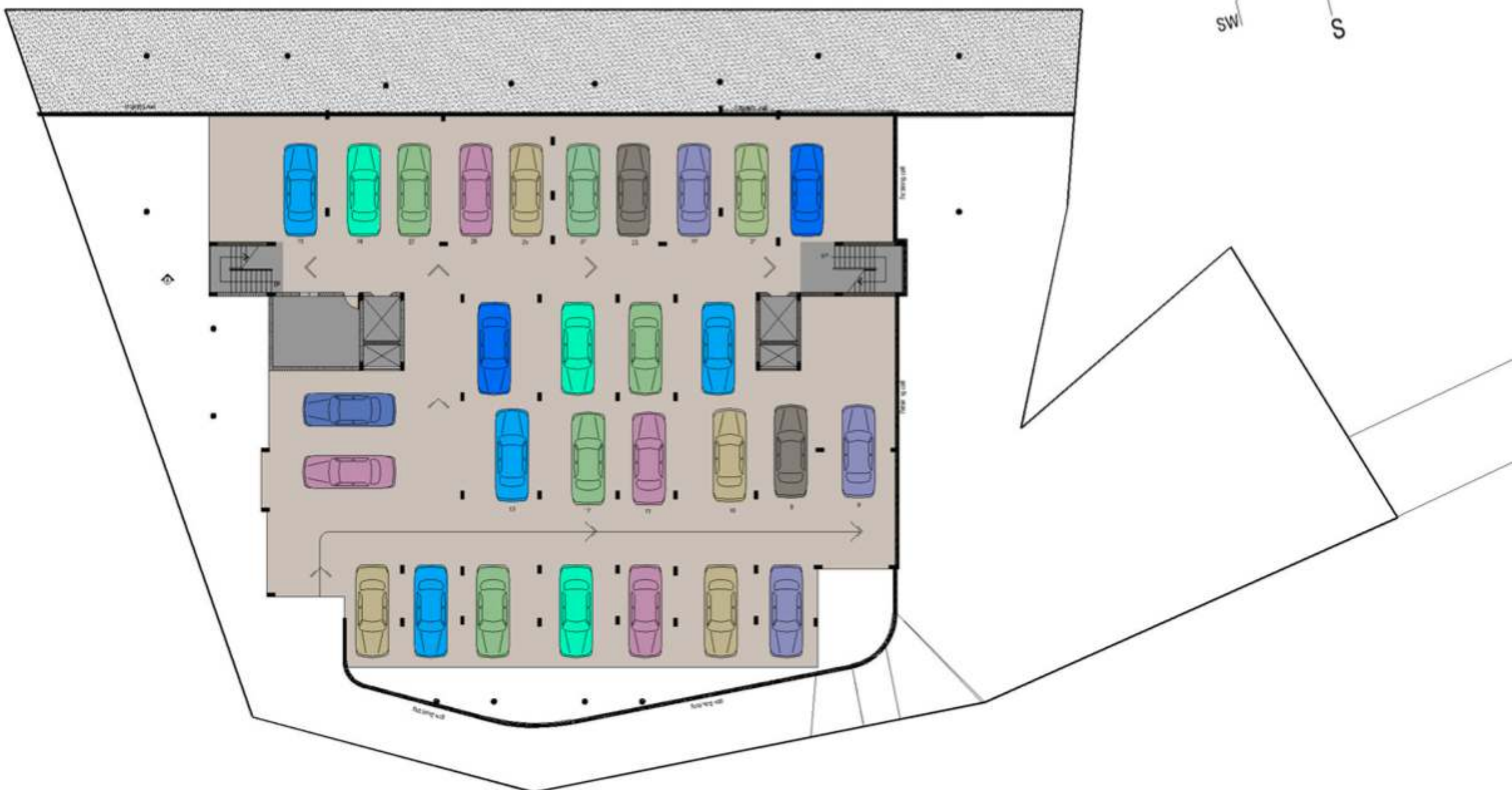
- Karyavattom : 1.7 Kms
- Kazhakoottam : 2.5 Kms
- Technopark : 2.8 Kms
- Green Field Stadium : 2 Kms
- KIMS Hospital : 9 K ms
- Airport : 12 Kms
- Kochuveli Railwaystation : 10 Kms



-1 Basement Floor Plan

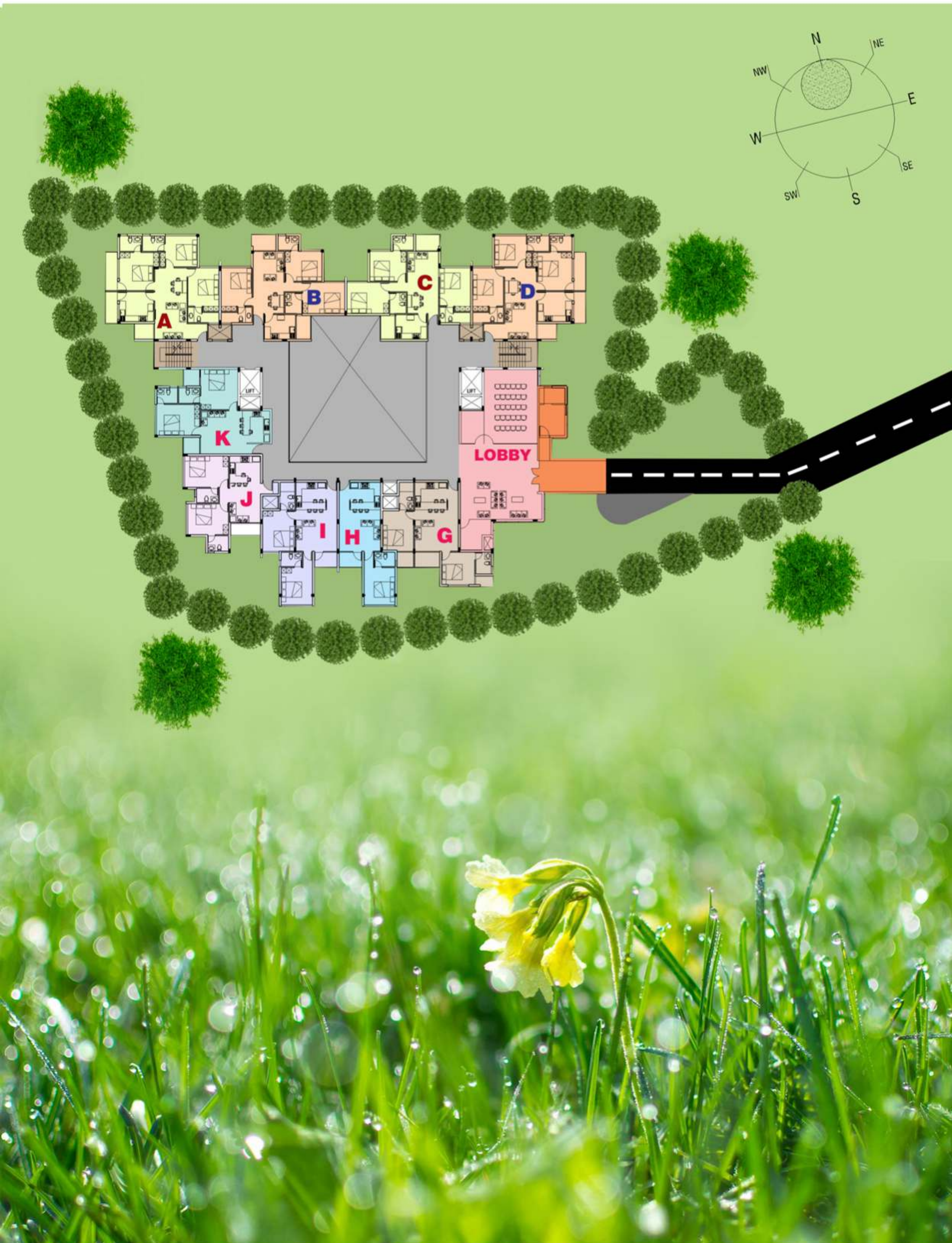


-2 Basement Floor Plan



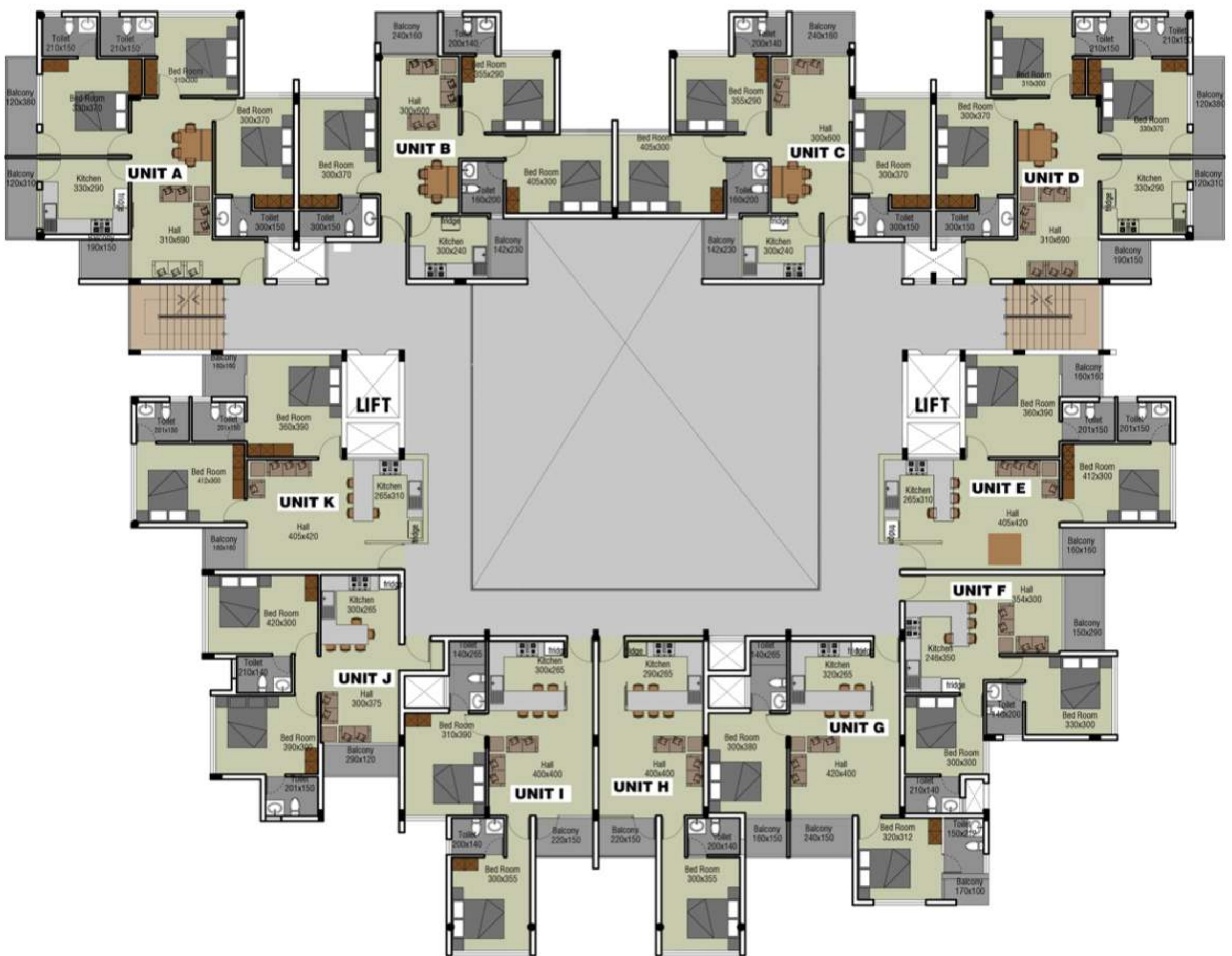


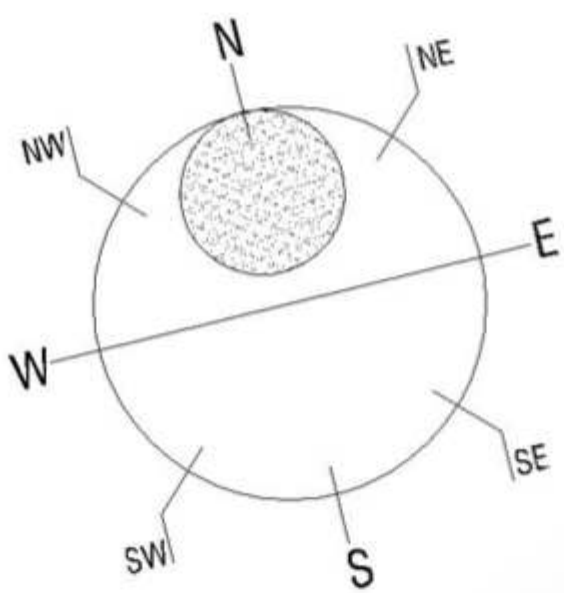
Ground Floor Plan





1st to 4th Floor Plan



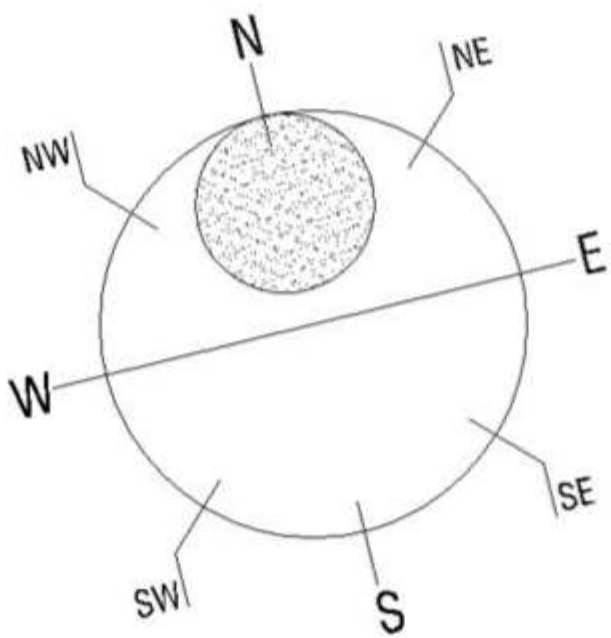


UNIT A & D

UNIT A & D / 3 BEDROOM

TOTAL FLOOR AREA (SBA)1389 SQFT



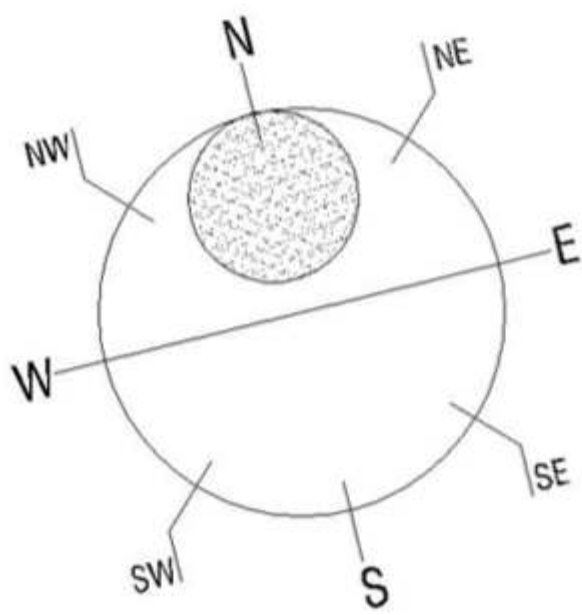


UNIT B & C

UNIT B & C / 3 BEDROOM

TOTAL FLOOR AREA (SBA) 1237 SQFT





UNIT E

UNIT E /2 BEDROOM

TOTAL FLOOR AREA (SBA) 1023 SQFT



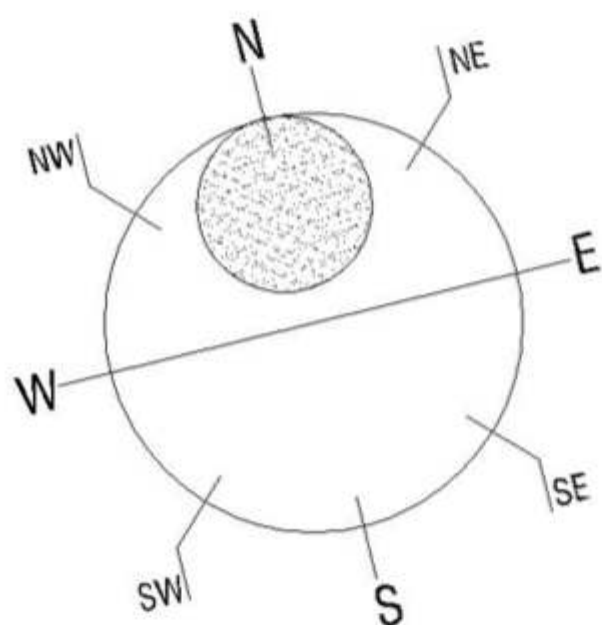


UNIT F

UNIT F / 2 BEDROOM

TOTAL FLOOR AREA (SBA) 824 SQFT



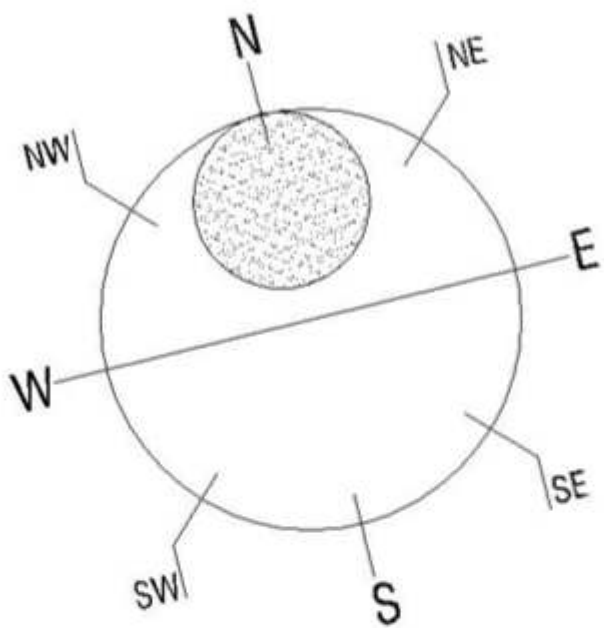
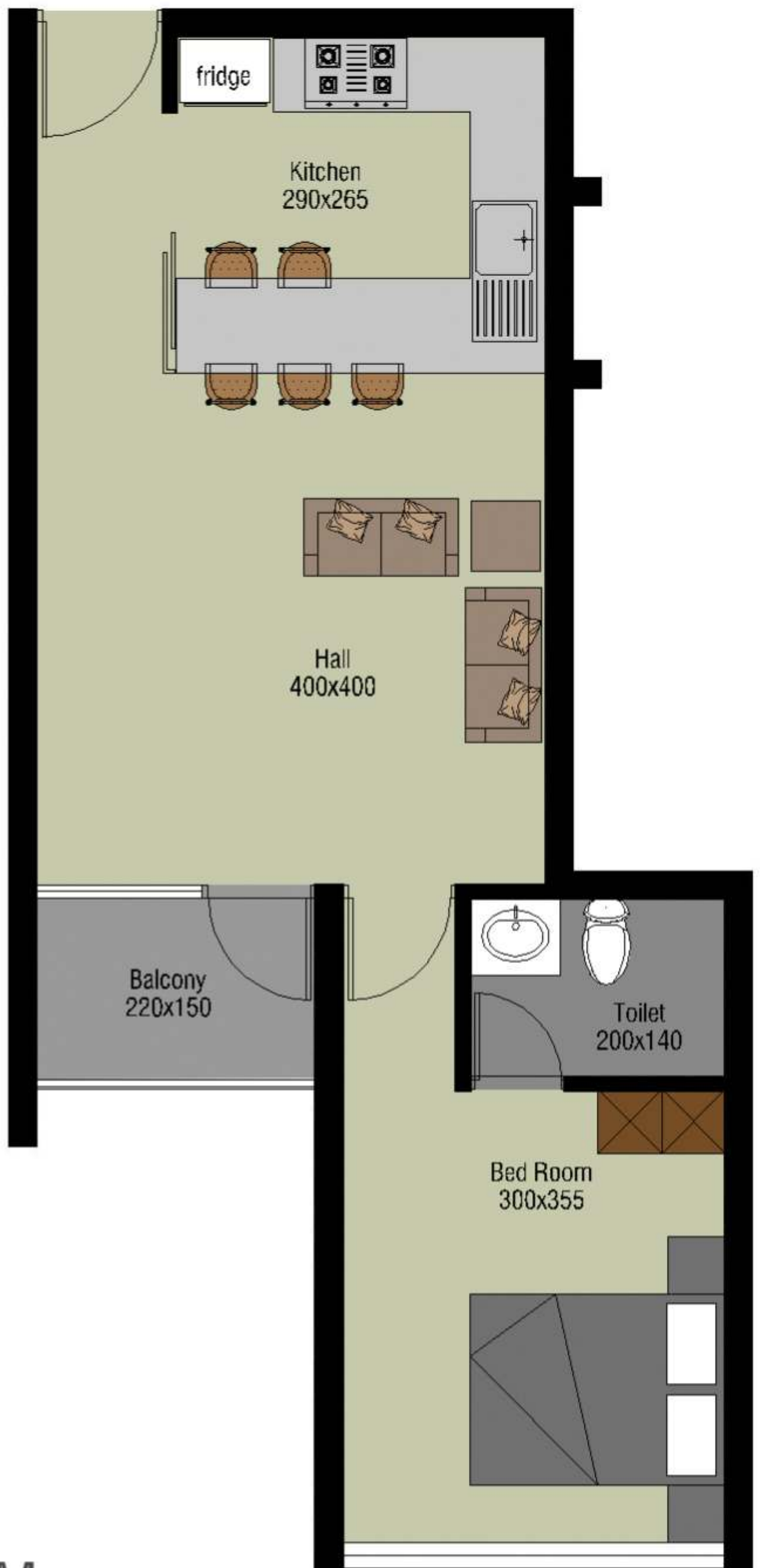


UNIT G

UNIT F/2 BEDROOM

TOTAL FLOOR AREA (SBA) 981 SQFT

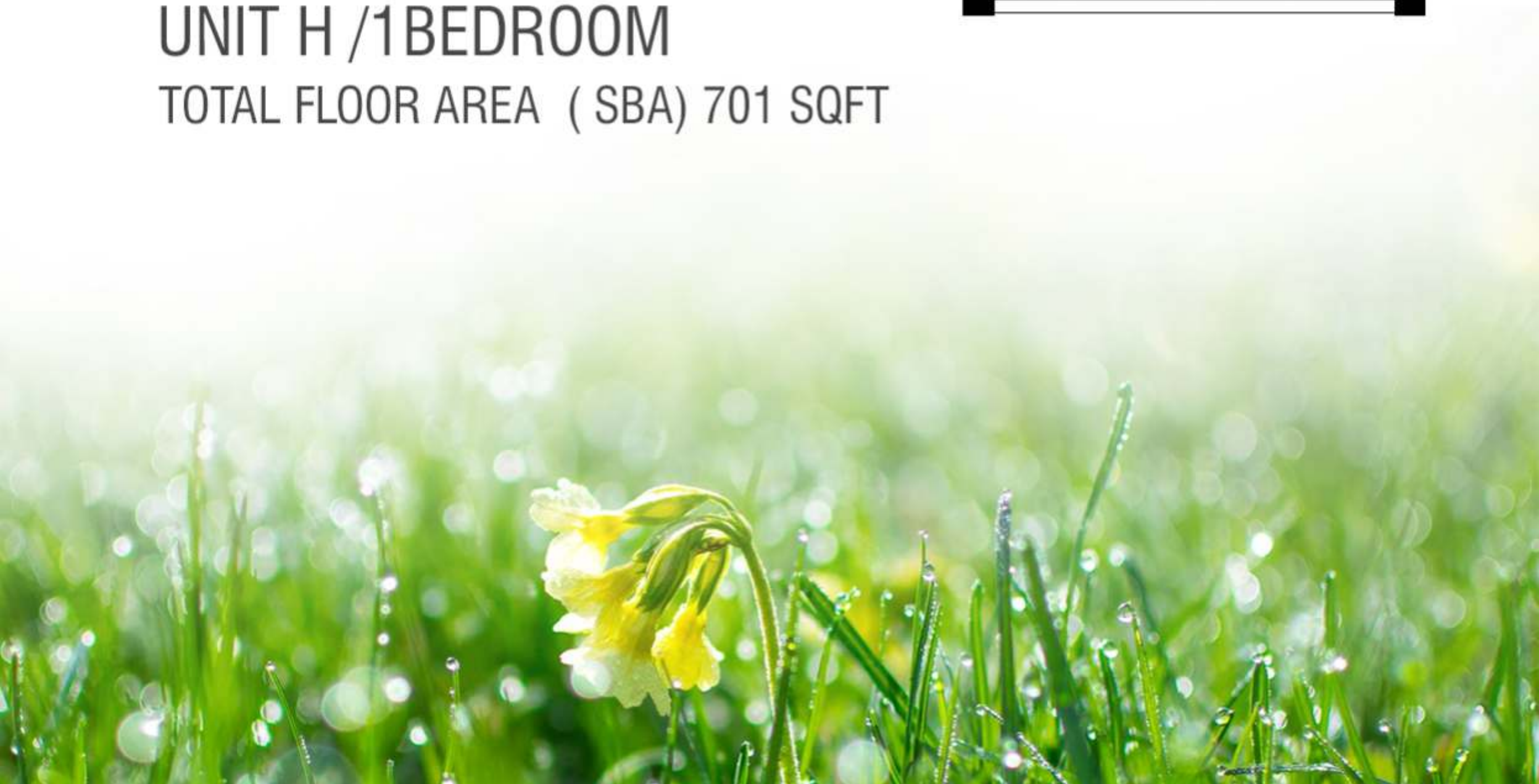


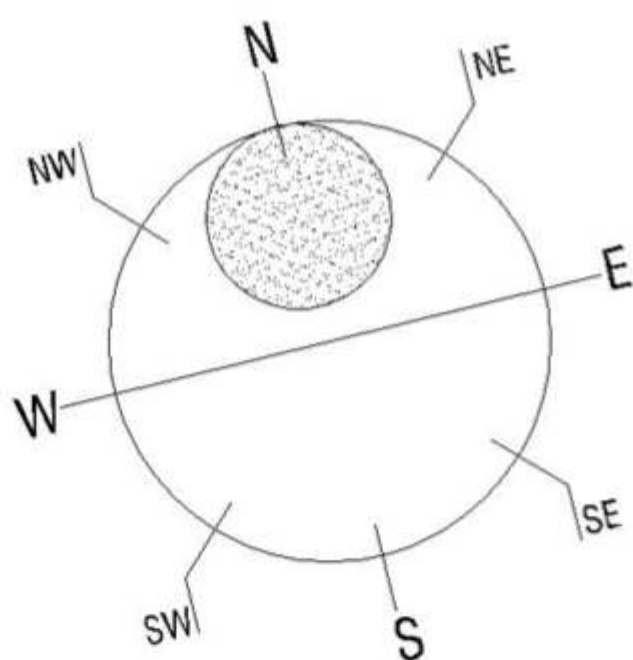
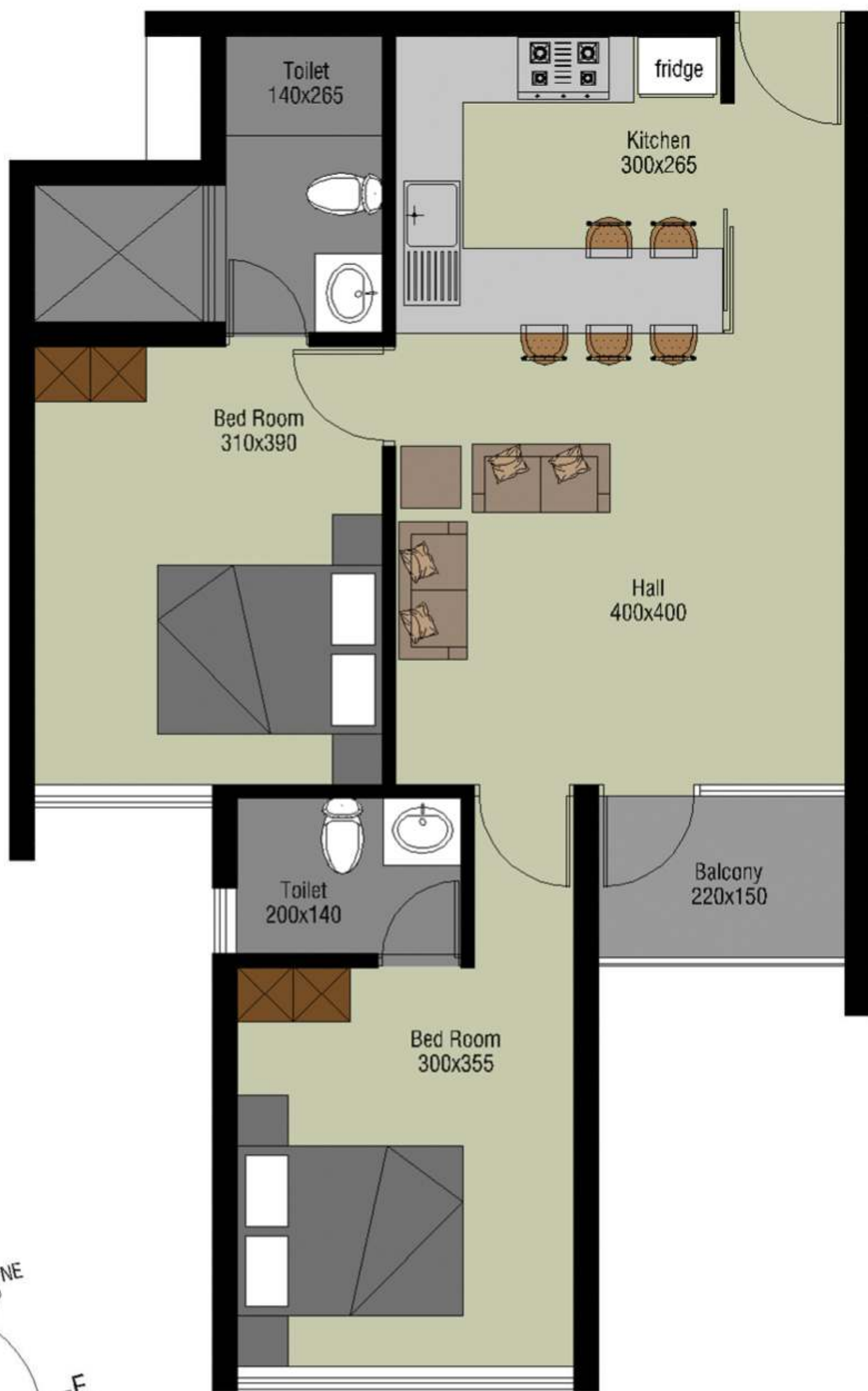


UNIT H

UNIT H /1BEDROOM

TOTAL FLOOR AREA (SBA) 701 SQFT

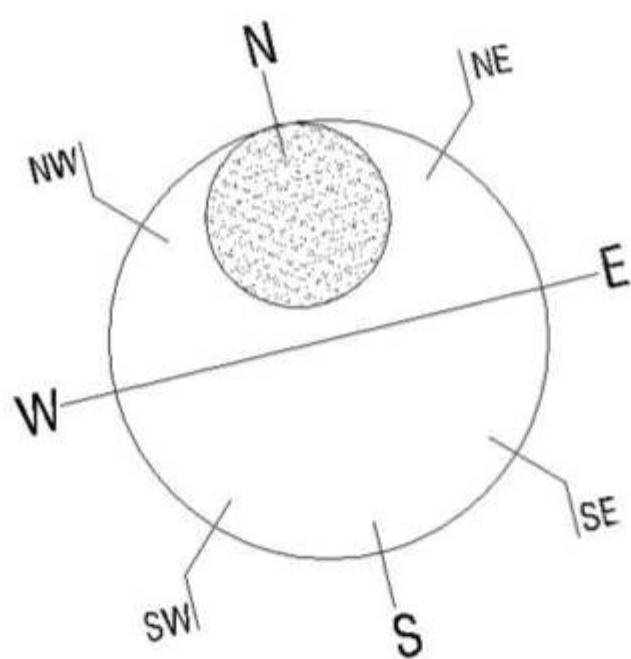




UNIT I

UNIT I/2 BEDROOM

TOTAL FLOOR AREA (SBA) 959 SQFT

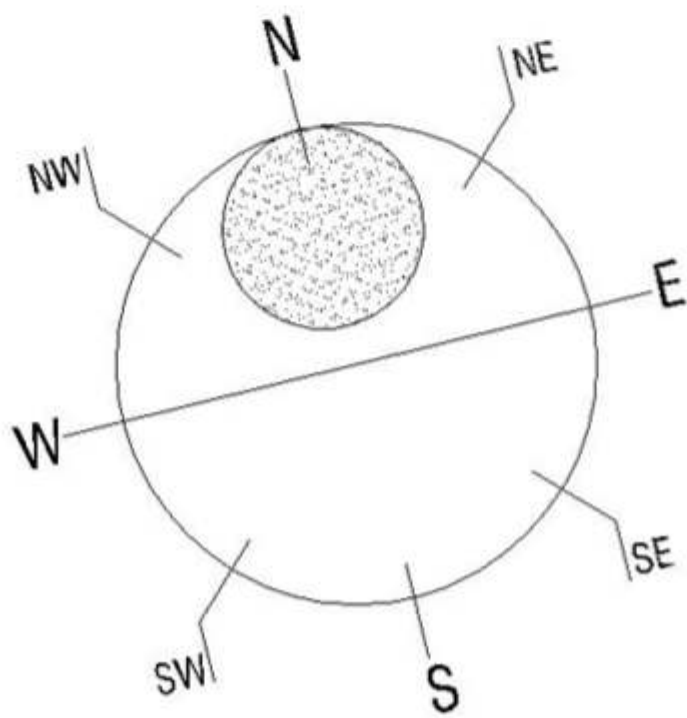


UNIT J

UNIT J / 2 BEDROOM

TOTAL FLOOR AREA (SBA) 866 SQFT





UNIT K

UNIT K/2 BEDROOM

TOTAL FLOOR AREA (SBA) 1022 SQFT





AMENITIES

- Fitness centre
- Party Hall
- Generator Back up in common areas, lift, 2 Fan & light points in each apartment
- Kids Play area
- 24 Hours security
- Games Room
- Reception area
- Intercom facility for common area and security cabin
- CCTV visitor surveillance.
- Waste management system.
- Covered parking.
- Drivers dormitory
- Rain Water Harvesting





Specifications

- **Structure**

RCC framed structure with concrete block partition & Suitable foundation as per the soil Report.

- **Entrance**

Lobby, staircase & common areas will be of granite or vitrified tile flooring.

- **Apartment Flooring**

Vitrified tiles in living, dining, bedrooms, passages leading to bedrooms & balconies

- **Kitchen**

- Vitrified tile flooring in kitchen .
- Vitrified tile Dado up to 2 feet high above kitchen counter-top.
- Granite kitchen counter top.
- Good quality single bowl, single drain stainless steel sink.
- Provision for water purifier.
- Provision for washing machine.

- **Bathroom**

- Anti skid ceramic tile flooring.
- Glazed wall tiles up to 7 feet
- All bathrooms are fitted with wall mounted EWC with ceramic cistern flush valve & quality CP fittings & sanitary fixtures. (Cera, Parryware or equivalent.)

- **Doors**

Main door – Decorative veneered panel entrance door.
Molded/Flush doors for bedrooms and toilet

- **Windows**

Powder Coated Aluminum frames with glazed, sliding/hinged shutters with M. S. Grills.



Specifications

- Painting

Putty finished emulsion paint for internal walls, enamel paints for doors, window grills & external wall will be painted with emulsion.

- Electrical

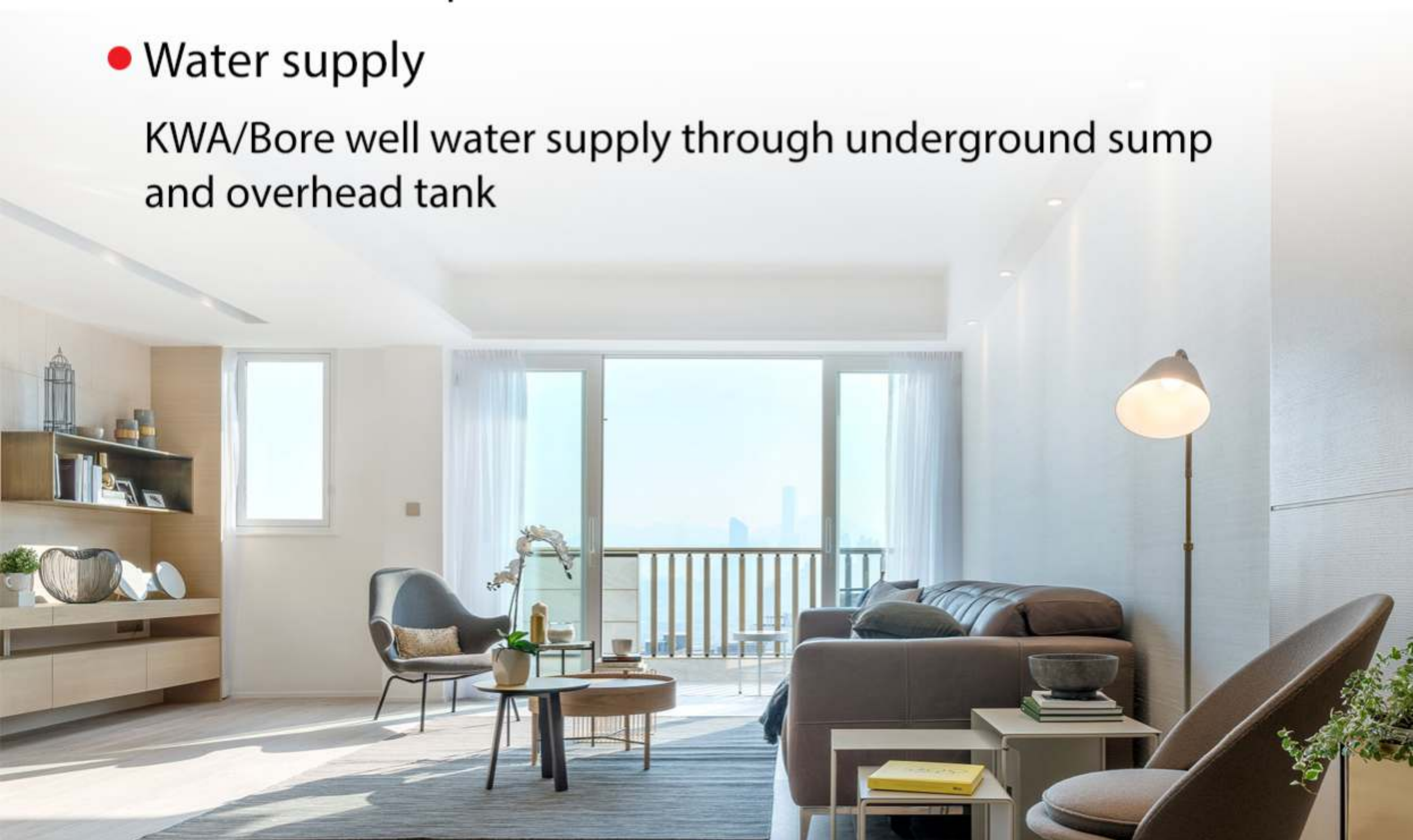
- All electrical wiring is concealed in walls & ceilings with premium quality PVC conduits.
- Adequate power outlets for lights, fans, exhaust-fans, calling bell, television are provided in all bedrooms, living and dining area.
- AC point in all bedrooms.
- Modular switches.
- Telephone outlet in living area & bedrooms.

- Elevators & D G Power

- Two Passenger lifts are provided in the block.
- Back-up for common area lighting, pumps and lifts & selected points in each flat.

- Water supply

KWA/Bore well water supply through underground sump and overhead tank





Completed Project

HAMNET COCONUT VALLEY



Ongoing Project

HAMNET HILLCREST



We provide incredible space for your togetherness

Feel the touch of Hamnet... Always...



Hamnet Builders & Developers PVT LTD.
Rangoon line, Kowdiar
Thiruvananthapuram
Tel: +91 471 4018117
Phone: +91 98472 1111 7, 99475 4111 8